

How to use

For testing accuracy, it should be used after menstrual bleeding has completely stopped.

Take the sample on the day or the day before, when submission.

Wash hands thoroughly before use.

Do not use if pregnant.

Avoid intercourse and vaginal washing 24 hours before use.

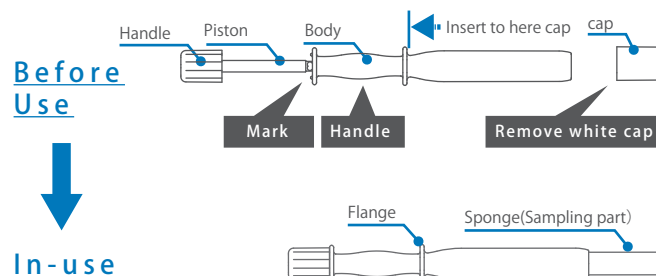
Avoid bathing immediately before use.

Do not use for any purpose other than the intended use.

If there are any changes in physical condition after use, consult a doctor.

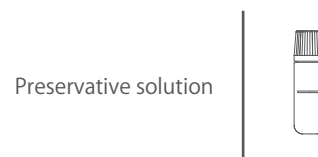
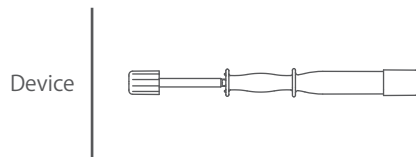
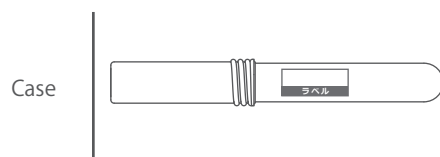
If you have a contraceptive device in womb, please contact to a doctor.

Product Specification

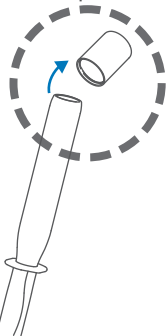


Preparation before use

Remove case, device and preservative solution.



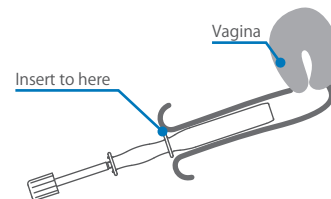
- 1 Be sure to remove the white cap.



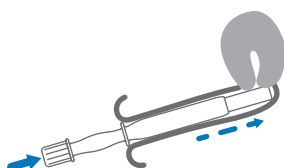
- 2 Sit in a relaxed position.



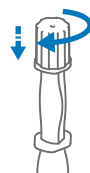
- 3 Slowly insert it deep into the vagina up to the flange.



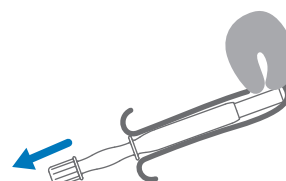
- 4 When the handle is pushed all the way to the end, the sponge hits the womb.



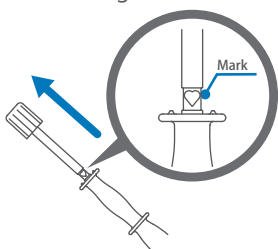
- 5 While pushing the handle towards the body, turn it 6 times in the same direction until you feel it 'click'. **Important** (Can be turned in either direction).



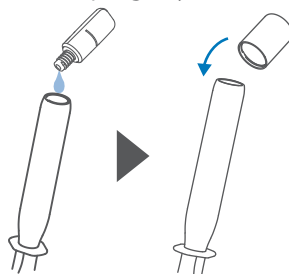
- 6 After slowly pulling the handle back to its original position, remove the instrument from the vagina.



- 7 Pull the handle hard until the heart mark is fully visible as shown in the diagram.



- 8 Pour all the preservation solution into the sponge part of the tip and close the cap tightly.



- 9 Place a device in a case, and fill in the required information on the label and the request form.

